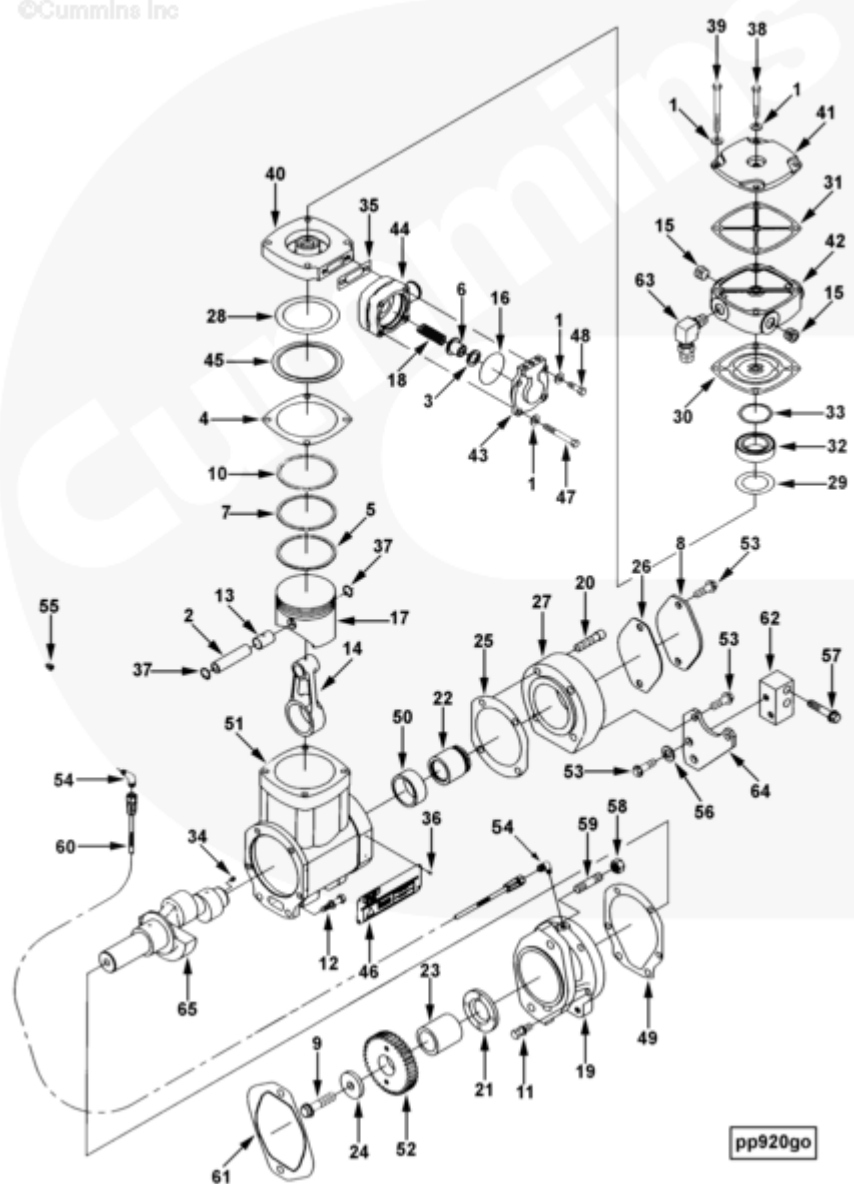




# Parts Catalog - Option Detail

Electronic Parts Catalog - Option Detail				
Option	Group	Graphic	Film Card	Date
CP9149-05	12.01	cp920go	Z	15-JAN-97
<b>Engines</b>	6C8.3, C GAS PLUS CM556, G8.3, G8.3 CM558, GTA8.3 CM558, ISC CM2150, ISC CM554, ISC CM850, ISC8.3 CM2250, ISC8.3 G CM2180 C101, ISL CM2150, ISL CM554, ISL CM850, ISL G CM2180, ISL8.9 CM2150 L110, ISL8.9 CM2880 L112, ISL9 CM2150 SN, ISL9 CM2250, ISL9 CM2350 L101, ISL9 CM2350 L111, ISLE4 CM850, L GAS PLUS CM556, L8.9, L8.9 L121, L8.9G CMOH2.0 L125B, L9 CM2350 L116B, L9 CM2350 L119B, L9 CM2350 L120C, L9 CM2350 L123B, L9.3 L105, L9.5 L117, L9N CM2380 L124B, QSC8.3 CM2250, QSC8.3 CM2880 C102, QSC8.3 CM554, QSC8.3 CM850(CM2850), QSL9 CM2250, QSL9 CM2250 L115, QSL9 CM2350 L102, QSL9 CM2350 L107, QSL9 CM2350 L118, QSL9 CM2350 L122, QSL9 CM554, QSL9 CM850(CM2850), QSL9 G CM558, QSL9 M CM2250 L106, QSL9.3 CM2880 L113			



SMALL | MEDIUM | LARGE

Cart	Ref No	Part Number	Part Description	Required	Remarks
View My Cart					
		CP9149-05	Air Compressor		
					CPR Cylinders: 1
					CPR Manufacturer/Model:
					Holset QE296-C
					CPR Method of Cooling: Water
					CFM: 13.2
					CPR Front Drive: Gear
					CPR SAE J744 Std Rear Flange:
					82-2
					Water Inlet: Rear
					Water Outlet: Rear
					Air Outlet: Front
					Air Inlet: Rear
					CPR SAE J744 Std Rear Drive:
					SAE 19-4
					Max Weight Off Rear Flange:
					To Be Determined
					CPR Max Thru Torque: 100 #ft
					Max CPR Speed (RPM): To Be
					Determined
					CPR Max Inlet Temp (deg F):
					220
					CPR Turbocharged: Yes
					CPR Max Boost: 25 PSI
					CPR Supplier: Cummins
					Unique Characteristics: 90
					dg elb for #10 JIC hose con
					(45 dg seat)

					Engine Family: C Series
					Discharge fitting horizontal
					outboard. The 3008465 pipe
					plug is to be installed
					In the cylinder block oil
					rifle tapped hole which is
					the second hole from FFOB.
					There is a risk of high oil
					consumption if this option is
					used with an air dryer and
					without an isolation valve.
<input type="checkbox"/>		3558052	Air Compressor	1	Recon Equivalent 3558052 RX
<input type="checkbox"/>	1	S 626	Plain Washer	4	5/16 in.
<input type="checkbox"/>	2	119810	Piston Pin	1	
<input type="checkbox"/>	3	127936	Rectangular Ring Seal	1	
<input type="checkbox"/>	4	3058952	Air Compressor Gasket	1	
<input type="checkbox"/>	5	180810	Oil Piston Ring	1	
<input type="checkbox"/>	6	184240	Unloader Valve Cap	1	
<input type="checkbox"/>	7	187350	Compression Piston Ring	1	
<input type="checkbox"/>	8	204048	Cover Plate	1	
<input type="checkbox"/>	9	554316	Twelve Point Cap Screw	1	1/2 - 20 x 2 in.
<input type="checkbox"/>	10	650330	Compression Piston Ring	1	
<input type="checkbox"/>	11	3011715	Captive Washer Cap Screw	4	3/8 - 16 X 1 3/16 in.
<input type="checkbox"/>	12	3012472	Captive Washer Cap Screw	2	3/8 - 16 X 1 1/2 in.
<input type="checkbox"/>		3018151	Compressor Connecting Rod	1	
<input type="checkbox"/>	13	3018153	Bushing	1	
	14	3558658	Compressor Connecting Rod	1	
<input type="checkbox"/>	15	3027232	Pipe Plug	2	1/2 NPT
<input type="checkbox"/>	16	3043995	O-Ring Seal	1	

	17	3045670	Compressor Piston	1	Sold In Higher Level Assy/Kit
<input type="checkbox"/>	18	3049553	Compression Spring	1	
<input type="checkbox"/>	19	3050367	Air Compressor Support	1	
<input type="checkbox"/>	20	3050862	Socket Head Cap Screw	4	7/16 - 14 x 1 3/4 in.
<input type="checkbox"/>	21	3050924	Thrust Bearing	1	
<input type="checkbox"/>	22	3050926	Spline Adapter	1	
<input type="checkbox"/>	23	3050927	Mounting Spacer	1	
<input type="checkbox"/>	24	3053093	Plain Washer	1	1/2 in.
<input type="checkbox"/>	25	3060539	Fuel Pump Gasket	1	
<input type="checkbox"/>	26	3558515	Hydraulic Pump Gasket	1	
	27	3558516	Hydraulic Pump Adapter	1	
<input type="checkbox"/>	28	3558664	Compressor Intake Valve	1	
<input type="checkbox"/>	29	3558665	Compressor Exhaust Valve	1	
<input type="checkbox"/>	30	3558668	Air Compressor Gasket	1	
<input type="checkbox"/>	31	3558677	Air Compressor Gasket	1	
<input type="checkbox"/>	32	3558690	Valve Disc Retainer	1	
<input type="checkbox"/>	33	3558691	Spring Washer	2	
<input type="checkbox"/>	34	3558712	Orifice Plug	1	1/16 NPTF
<input type="checkbox"/>	35	3558723	Connection Gasket	1	
<input type="checkbox"/>	36	3558735	Drive Screw	2	
<input type="checkbox"/>	37	3558754	Retaining Ring	2	
<input type="checkbox"/>	38	3558797	Hexagon Head Cap Screw	1	5/16-18 x 2 in.
<input type="checkbox"/>	39	3558798	Hexagon Head Cap Screw	4	
<input type="checkbox"/>	40	3558799	Compressor Valve Body	1	
<input type="checkbox"/>	41	3558815	Cover Plate	1	
<input type="checkbox"/>	42	3558817	Compressor Head	1	
<input type="checkbox"/>	43	3558828	Unloading Valve Body	1	
<input type="checkbox"/>	44	3558832	Air Compressor Inlet Connection	1	
<input type="checkbox"/>	45	3558899	Compressor Intake Valve Retainer	1	
	46	3558915	Nameplate	1	

<input type="checkbox"/>	47	<a href="#">3558921</a>	Hexagon Head Cap Screw	2	5/16 - 18 x 2.50
<input type="checkbox"/>	48	<a href="#">3558922</a>	Hexagon Head Cap Screw	2	5/16 - 18 x 1.00
<input type="checkbox"/>	49	<a href="#">3558947</a>	Support Gasket	1	Serviced as 3355118
<input type="checkbox"/>		<a href="#">3558954</a>	Compressor Crankcase	1	
<input type="checkbox"/>	50	<a href="#">147610</a>	Bushing	1	
	51	<a href="#">3558853</a>	Compressor Crankcase	1	
<input type="checkbox"/>	52	<a href="#">3902595</a>	Accessory Drive Gear	1	
<input type="checkbox"/>	53	<a href="#">3903112</a>	Hexagon Flange Head Cap Screw	2	M10 X 1.50 X 30.
<input type="checkbox"/>	54	<a href="#">68139</a>	Male Adapter Elbow	2	1/8 NPTF X 7/16 - 20 (90).
<input type="checkbox"/>	55	<a href="#">3008465</a>	Pipe Plug	1	1/8 NPT
<input type="checkbox"/>	56	<a href="#">3035806</a>	Plain Washer	2	M12
<input type="checkbox"/>	57	<a href="#">3900634</a>	Hexagon Flange Head Cap Screw	2	M10 X 1.50 X 50.
<input type="checkbox"/>	58	<a href="#">3902692</a>	Regular Hexagon Nut	2	M12 x 1.75
<input type="checkbox"/>	59	<a href="#">3905371</a>	Double End Plain Stud	2	
<input type="checkbox"/>	60	<a href="#">3906747</a>	Flexible Hose	1	Oil Supply Line
<input type="checkbox"/>	61	<a href="#">3913287</a>	Hydraulic Pump Gasket	1	
<input type="checkbox"/>	62	<a href="#">3926822</a>	Mounting Spacer	1	
<input type="checkbox"/>	63	<a href="#">100501</a>	Male Adapter Elbow	1	1/2-14 x 7/8-14
<input type="checkbox"/>	64	<a href="#">3928486</a>	Air Compressor Brace	1	
	65	<a href="#">3050368</a>	Compressor Crankshaft	1	